

广西猫儿山鹡虻属二新种 (双翅目: 鹡虻科)

Two New Species of *Rhagio* from Maoer Mountain in Guangxi (Diptera: Rhagionidae)

杨定 杨集昆
Yang Ding Yang Jikun

(北京农业大学 北京海淀区圆明园西路 100094)
(Beijing Agricultural University, West Yuanmingyuan Road, Beijing, 100094)

摘要 记述采自广西猫儿山鹡虻属 (*Rhagio*) 2新种, 即无痣鹡虻 (*R. asticta* Yang et Yang) 和拟无痣鹡虻 (*R. pseudasticta* Yang et Yang), 并综述属的特征。模式标本存北京农业大学昆虫标本室。

关键词 双翅目 鹡虻科 鹡虻属 新种 猫儿山 广西

In this paper two new species are described from Maoer mountain, Guangxi. The types of new species are deposited in the Insect Collections of Beijing Agricultural University.

1. *Rhagio asticta* Yang et Yang, sp. nov. (Fig. 1~6)

Body length 5.1~5.5 mm, wing length 5.3~7.3 mm.

Head black with pale gray pollinosity; hairs on head chiefly black, but face with yellow hairs. Antenna yellow, arista brown. Proboscis yellow with black hairs; palpus yellow with black hairs.

Thorax brownish black with pale gray pollinosity; humeri, postalar calli and scutellum yellow. Pteropleuron brownish. Mesonotum and scutellum black haired; metapleuron yellow haired. Legs yellow; mid coxa and base of hind coxa brownish; fore and mid femora tinged with brown subapically, apical half of hind femur brownish black; fore and hind tibiae brown at apex; tarsi dark brown; legs chiefly black haired, but coxa chiefly yellow haired. In female, coxae entirely brownish black, fore tibia pale yellow (except for apex darker) with chiefly pale yellow hairs. Wing yellowish, apical portion and posterior margin black, without stigma. Halter yellow.

Abdomen brownish black with pale gray pollinosity; tergites 1~2 yellow, tergite 2 with a median black spot; posterior portions of tergites 3~4 yellow; sternites 1~3

entirely yellow, posterior margin of sternite 4 yellow. Hairs on abdomen chiefly black. Male genitalia (Figs. 3~6); Tergite 9 (T9) wider than long, with distinct basal incision; cercus (C) with latero-apical corner distinct and obtuse; sternite 10 (S10) rounded apically; sternite 9 (S9) large and rounded apically; gonocoxite (GC) large and long; gonostylus (GS) weakly curved with obtuse apex; gonocoxal apodemes (GA) long and thin, nearly parallel; aedeagal apodeme (AA) very slender.

Holotype ♂, allotype ♀, paratypes 2♂♂ 2♀♀, Guangxi; Maoer mountain (1400~1700 m), 1992-08-18/24, Yang Chikun, Yang Chunqing, Zheng Leyi.

This species is similar to *R. meridionalis* Yang et Yang from South China, but may be separated from the latter by having the wing without distinct stigma.

2. *Rhagio pseudasticta* Yang et Yang, sp. nov. (Fig. 7)

Body length 6.0 mm, wing length 6.3 mm.

Head black with pale gray pollinosity; hairs on head black and white, but face with white hairs. Antenna yellow, arista brown. Proboscis brownish yellow with black hairs; palpus yellow with black hairs.

Thorax yellow with pale gray pollinosity; mesonotum brownish black except for humeri and postalar calli yellow; postnotum brownish black with lateral margin brownish yellow; mesopleuron, sternopleuron (except upper and posterior margins), lower portion of hypopleuron brown to brownish black. Mesonotum and scutellum black haired; metapleuron yellow haired. Legs yellow; fore fe-

Guangxi Sciences, Vol. 1 No. 3, Aug. 1994

mur tinged with brown subapically, hind femur brownish black with basal portion and tip yellow to brownish yellow; hind tibia brown at apex; tarsi dark brown; legs chiefly black haired, but fore coxa white haired, and mid and hind coxae yellow haired. Wing yellowish, apical portion black, with distinct darker stigma. Halter yellow.

Abdomen brownish black with pale gray pollinosity; tergite 1 entirely yellow; apical portions of tergites 2~4 yellow; sternites 1~2, posterior margin of sternite 3 yellow. Hairs on abdomen chiefly black.

Holotype ♀, Guangxi: Maoer mountain (1 400 m), 1992-08-24, Yang Chikun, Yang Chunqing.

This species is similar to *R. meridionalis* Yang et Yang, but differs from the latter in the pleuron yellow with brown or brownish black markings and wing with apical portion black. In *meridionalis*, the pleuron is brownish black, the wing is brownish on apical portion.

Key words Diptera, Rhagionidac, *Rhagio*, new species, Maoer mountain, Guangxi

本文记述了采自广西猫儿山的鹞虻属 *Rhagio* 2新种, 并对其属征作了综述。模式标本存北京农业大学昆虫标本室。

鹞虻属 *Rhagio* Fabricius Syst. Ent., P. 761. 1775

模式种: *Musca scolopacea* Linnaeus, 1758

异名: *Leptis* Fabricius, 1805

属征: 雄复眼在额区相接, 但有时窄的分开; 雌复眼宽的分开。唇基发达, 隆突。触角柄节和梗节大小略相等, 鞭节近锥状, 有一细长的芒。须细长, 仅1节。

中胸背板明显隆突; 后侧片前隆突部被毛。胫节距式: 0-2-2。前足基节较长, 中后足基节较短; 中足基节具一内垫, 后足基节有一腹痛突。翅有较发达的翅瓣; R_{2+3} 接近 R_1 , R_5 终止于翅末端稍后; 盘室狭长, 向翅缘伸出了3条脉; Cu 与 A 末端很接近。

分布: 古北区、东洋区、新北区和新热带区。

1 无痣鹞虻, 新种 *Rhagio asticta* Yang et Yang (图1~6)

体长5.1~5.5 mm, 前翅长5.3~7.3 mm。

头部黑色, 有灰白粉; 主要有黑毛, 但颜区毛黄色。触角黄色, 柄节和梗节有黑毛, 鞭节有黑毛和黄色, 芒褐色。喙黄色, 有黑毛; 须黄色, 有黑毛。

胸部黑褐色, 有灰白粉; 肩区、翅后胛区和小盾片黄色。翅侧片浅褐色。中胸背板和小盾片有黑毛, 后侧片毛黄色。足黄色, 但中足基节和后足基节基部浅褐色; 前中足腿节端前部带有褐色, 后足腿节端半部黑褐色; 前后足胫节端部褐色, 跗节暗褐色; 足主要有黑毛, 但基节主要有黄毛。雌性足基节黑褐色; 前足胫节淡黄色且端部较暗, 主要有淡黄毛。翅淡黄色, 端部和后缘一致黑色, 无明显翅痣。平衡棒黄色。

腹部黑褐色, 有灰白粉; 第1~2背板黄色, 第2背板中部有一黑斑, 第3~4背板后缘区黄色, 第1~3腹板全黄色, 第4腹板后缘黄色。雌性腹部第2背板仅端部黄色, 第2~3腹板仅端缘黄色或黄褐色。腹部毛主要黑色。雄腹端(图3~6)第9背板基缘凹缺, 尾须有明显钝的端侧角, 第10腹板端宽圆, 第9腹板近半圆形; 左右生殖基节宽大且分开, 生殖突略弯的棒状且末端较钝, 生殖基节把细长近平行; 阳茎把很细长。

正模♂, 配模♀, 副模2♂♂2

♀♀, 广西猫儿山(1 400~1 700 m), 1992-08-18/24, 杨集昆、杨春清、郑乐怡。

新种与分布于我国南方的南方鹞虻 *R. meridionalis* Yang et Yang 近似, 但后者翅有一明显的较暗的痣斑。

2 拟无痣鹞虻, 新种 *Rhagio pseudasticta* Yang et Yang (图7)

体长6.0 mm, 前翅长6.3 mm。

头部黑色, 有灰白粉; 有黑毛和白毛, 但颜区毛白色。触角黄色, 柄节和梗节有黑毛, 鞭节有

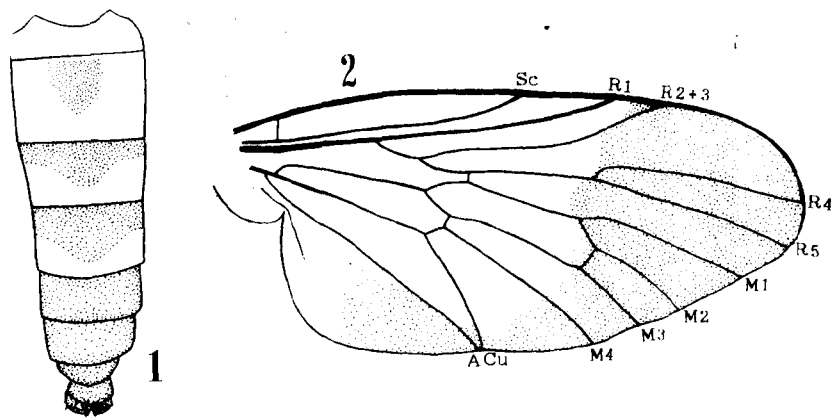


图1~2 无痣鹞虻 *Rhagio asticta* Yang et Yang sp. nov., ♂

1. 腹部, 背视 Abdomen, dorsal view; 2. 翅 Wing.

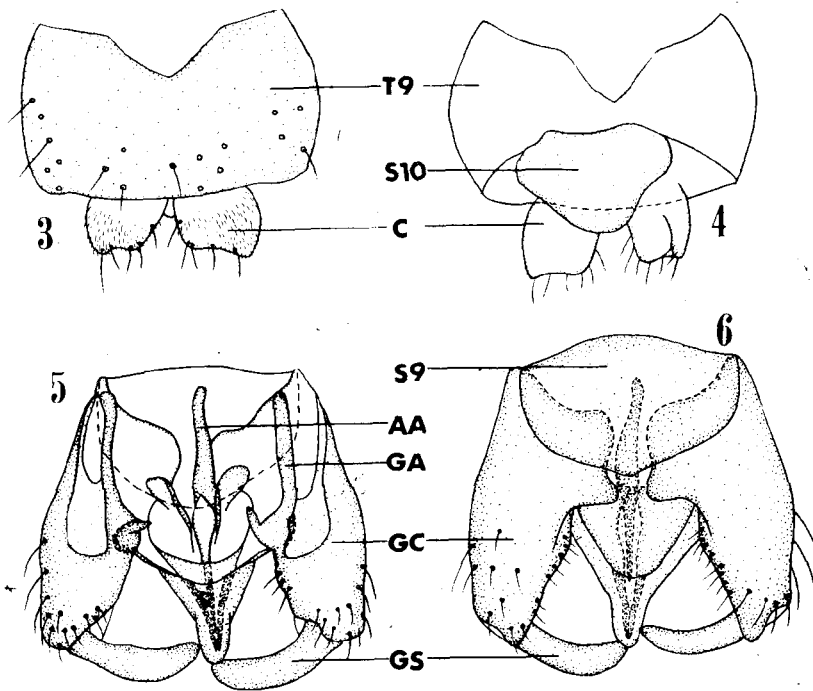


图3~6 无痣鹬虻 *Rhagio asticta* Yang et Yang sp. nov., 雄性外生殖器 Male externalis

3. 第9背板和尾须, 背视 Tergite 9 and cerci, dorsal view; 4. 第9背板, 第10腹板和尾须, 腹视 Tergite 9, sternite 10 and cerci, ventral view; 5. 生殖体, 背视 Genital capsule, dorsal view; 6. 生殖体, 腹视 Genital capsule, ventral view. AA, 阴茎把 Aedeagal apodeme; C, 尾须 Cercus; GA, 生殖基节把 Gonocoxal apodeme; GC, 生殖基节 Gonocoxite; GS, 生殖突 Gonostylus; S9, 第9腹板 Sternite 9; S10, 第10腹板 Sternite 10; T9, 第9背板 Tergite 9.

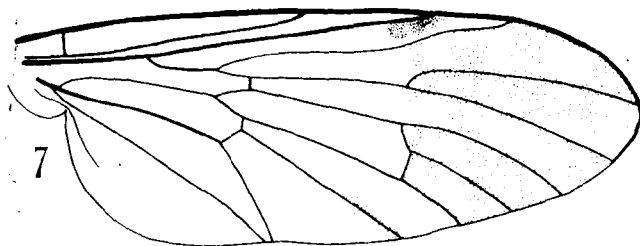


图7 拟无痣鹬虻 *Rhagio pseudasticta* Yang et Yang, 雌翅 Female wing

黑毛和黄毛, 芒褐色。喙黄褐色。有黑毛; 颧黄色, 有黑毛。

胸部黄色, 有灰白粉; 中胸背板黑褐色, 但肩区和翅后胛区黄色; 后背片黑褐色, 侧缘黄褐色; 中侧片、腹侧片(除上、后缘)、下侧片下部褐色至黑褐色。中胸背板和小盾片有黑毛, 后侧片毛黄色。足黄色; 前足腿节端前部带有褐色, 后足腿节黑褐色且基部和末端黄色至黄褐色; 后足胫节端部褐色; 跗节暗褐色; 足毛主要黑色, 但前足基节毛白色。中后足基节毛黄色。翅淡黄色, 端部黑色; 翅痣明显、较暗。平衡棒黄色。

腹部黑褐色, 有灰白粉; 但第1背板黄色, 第2~4背板端部黄色; 第1~2腹板和第3腹板端缘黄色。腹部毛主要黑色。

正模♀, 广西猫儿山(1400 m), 1992-08-24, 杨集昆、杨春清。

新种与南方鹬虻 *R. meridionalis* Yang et Yang 较近似, 但后者胸侧黑褐色, 翅端部的斑浅褐色。因翅有一明显翅痣而不同于前种。

致谢

在研究过程中, 承蒙日本鹿儿岛大学永富昭教授、汤川淳一教授和栢下町钰敏副教授热情支持与帮助, 作者在此表示衷心的感谢。

(责任编辑: 蒋汉明)